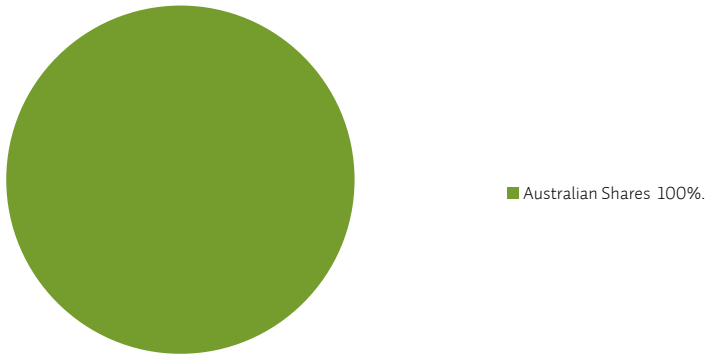


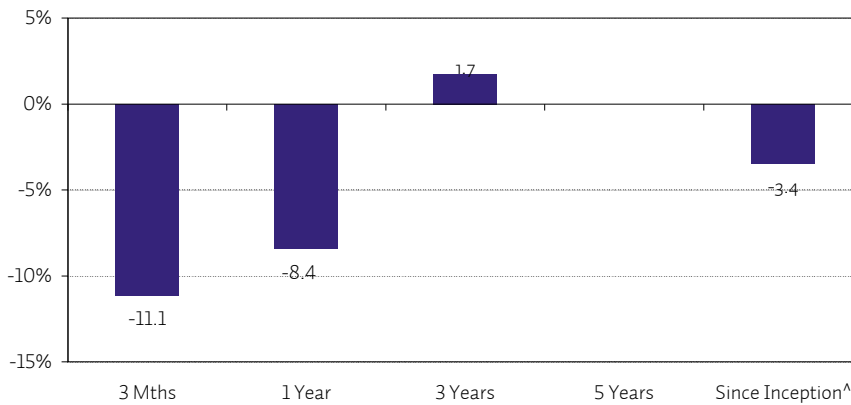
GESB Super MY plan - Australian Shares

QUARTERLY FACT SHEET AS AT 30/09/11

TARGET STRATEGIC ASSET ALLOCATION*



INVESTMENT RETURNS#



Notes:

All returns are reported net of Management Expense Ratio (MER) and applicable taxes. Any returns greater than 1 year are annualised. Any returns not shown are unavailable.

^Inception date 22/05/2007

*The target allocations and allowable ranges may be subject to change during your membership. GESB may alter the strategic asset allocation or the composition of individual asset classes from time to time, without prior notice.

The cost of managing different investments varies, so the MER is different for each investment plan. For example, investment costs for the Cash plan or Conservative plan will be lower than those for a Growth plan, as growth assets are typically more complex and expensive to manage.

The performance information should be used as a guide only. The performance of your investment plan is not guaranteed and returns may move up and down depending on market conditions. Past performance should not be relied on as an indication of future performance. Changes in investment strategy, such as the appointment of new external investment managers, may impact on future performance.

All MY plan strategies may contain a small strategic allocation to cash for liquidity purposes.

~Global fixed interest has been separated into government bonds and diversified fixed interest. Private equity was previously communicated as a part of the alternative asset class.

Issued on 02/12/2011

The information contained in this publication is of a general nature, and does not take into account your investment objectives, financial situation or needs. GESB is not licensed to provide financial product advice. Past performance may not be a reliable indicator of future performance. Before acting or relying on any of the information contained in this publication, you should consider seeking professional financial advice from GESB Financial Advice or another suitably qualified adviser.

FUND FACTS

Investment objective:

To outperform the plan's benchmark index + 1.0% pa over rolling 3 year periods

People looking to maximise their long-term investment returns and who can accept a wide range of earnings (high to low) from year to year

Who might choose this plan?:

Expected risk/ return profiles:

High risk and return

Possibility of a negative return:

Relatively high

TOP 10 HOLDINGS

Australian shares

Amcor
ANZ
BHP Billiton
Brambles
Commonwealth Bank
National Australia Bank
Rio Tinto
Telstra
Westpac
Woolworths

International shares

Barrick Gold
Exxon Mobil
GlaxoSmithKline
HSBC
IBM
Microsoft
Oracle Corp
Pfizer
Roche
Vodafone

MANAGERS

GESB adopts a multi-manager structure and engages the following specialist investment managers to manage GESB investment plans:

International shares

Edinburgh
Fidelity
Genesis
GMO
Lazard
Newton
Sarasin
Schroders
State Street

Private equity[~]

Macquarie
Property
AMP
CBRE Clarion
Perennial

Australian shares

AMP
Arnhem
Perennial
SG Hiscock
Tribeca

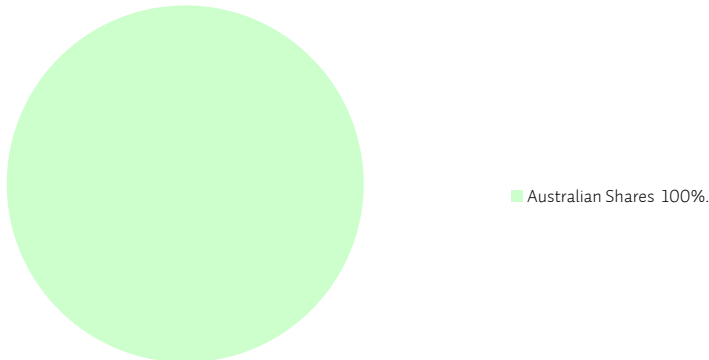
Cash

Macquarie

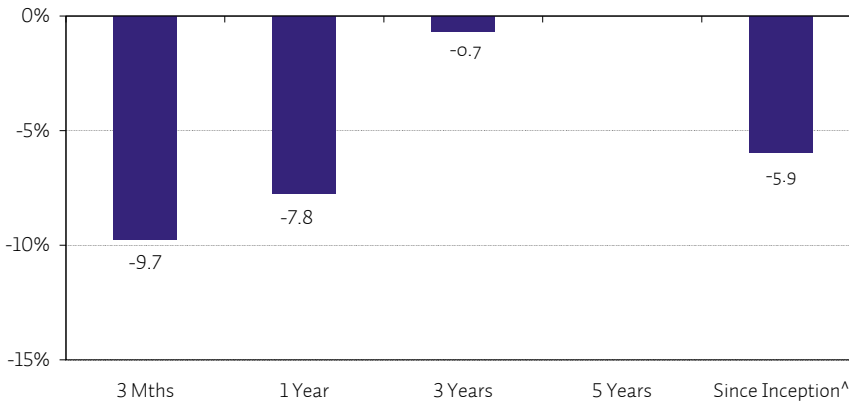
Global fixed interest[~]

AMP
Aberdeen
PIMCO
UBS
Wellington

TARGET STRATEGIC ASSET ALLOCATION*



INVESTMENT RETURNS#



Notes:

All returns are reported net of Management Expense Ratio (MER) and applicable taxes. Any returns greater than 1 year are annualised. Any returns not shown are unavailable.

^Inception date 08/06/2007

*The target allocations and allowable ranges may be subject to change during your membership. GESB may alter the strategic asset allocation or the composition of individual asset classes from time to time, without prior notice.

The cost of managing different investments varies, so the MER is different for each investment plan. For example, investment costs for the Cash plan or Conservative plan will be lower than those for a Growth plan, as growth assets are typically more complex and expensive to manage.

The performance information should be used as a guide only. The performance of your investment plan is not guaranteed and returns may move up and down depending on market conditions. Past performance should not be relied on as an indication of future performance. Changes in investment strategy, such as the appointment of new external investment managers, may impact on future performance.

All MY plan strategies may contain a small strategic allocation to cash for liquidity purposes.

~Global fixed interest has been separated into government bonds and diversified fixed interest. Private equity was previously communicated as a part of the alternative asset class.

Issued on 02/12/2011

The information contained in this publication is of a general nature, and does not take into account your investment objectives, financial situation or needs. GESB is not licensed to provide financial product advice. Past performance may not be a reliable indicator of future performance. Before acting or relying on any of the information contained in this publication, you should consider seeking professional financial advice from GESB Financial Advice or another suitably qualified adviser.

FUND FACTS

Investment objective: To outperform the plan's benchmark index + 1.0% pa over rolling 3 year periods

Who might choose this plan?: People looking to maximise their long-term investment returns and who can accept a wide range of earnings (high to low) from year to year

Expected risk/ return profiles: High risk and return

Possibility of a negative return: Relatively high

TOP 10 HOLDINGS

Australian shares	International shares
Ancor	Barrick Gold
ANZ	Exxon Mobil
BHP Billiton	GlaxoSmithKline
Brambles	HSBC
Commonwealth Bank	IBM
National Australia Bank	Microsoft
Rio Tinto	Oracle Corp
Telstra	Pfizer
Westpac	Roche
Woolworths	Vodafone

MANAGERS

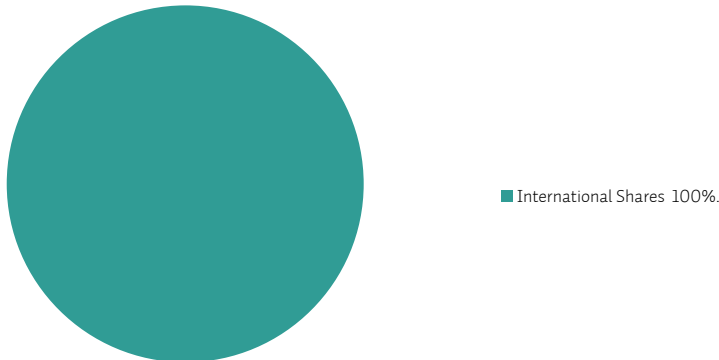
GESB adopts a multi-manager structure and engages the following specialist investment managers to manage GESB investment plans:

International shares	Private equity ~
Edinburgh	Macquarie
Fidelity	Property
Genesis	AMP
GMO	CBRE Clarion
Lazard	Perennial
Newton	Cash
Sarasin	Macquarie
Schroders	Global fixed interest ~
State Street	AMP
Australian shares	Aberdeen
AMP	PIMCO
Arnhem	UBS
Perennial	Wellington
SG Hiscock	
Tribeca	

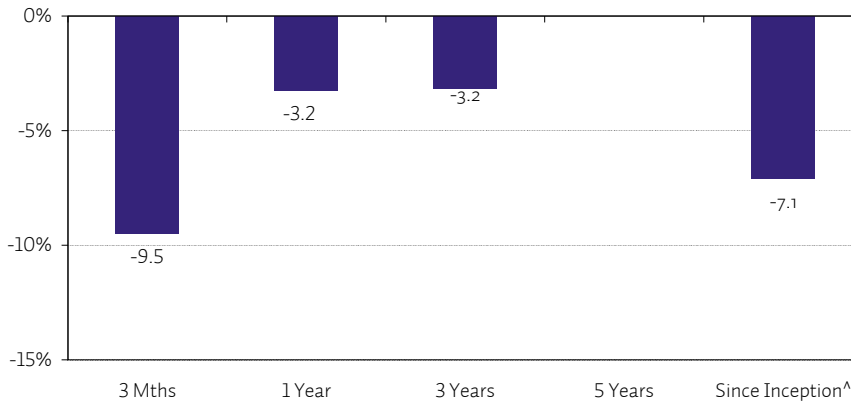
GESB Super MY plan - International Shares

QUARTERLY FACT SHEET AS AT 30/09/11

TARGET STRATEGIC ASSET ALLOCATION*



INVESTMENT RETURNS#



Notes:

All returns are reported net of Management Expense Ratio (MER) and applicable taxes. Any returns greater than 1 year are annualised. Any returns not shown are unavailable.

^Inception date 22/05/2007

*The target allocations and allowable ranges may be subject to change during your membership. GESB may alter the strategic asset allocation or the composition of individual asset classes from time to time, without prior notice.

The cost of managing different investments varies, so the MER is different for each investment plan. For example, investment costs for the Cash plan or Conservative plan will be lower than those for a Growth plan, as growth assets are typically more complex and expensive to manage.

The performance information should be used as a guide only. The performance of your investment plan is not guaranteed and returns may move up and down depending on market conditions. Past performance should not be relied on as an indication of future performance. Changes in investment strategy, such as the appointment of new external investment managers, may impact on future performance.

All MY plan strategies may contain a small strategic allocation to cash for liquidity purposes.

~Global fixed interest has been separated into government bonds and diversified fixed interest. Private equity was previously communicated as a part of the alternative asset class.

Issued on 02/12/2011

The information contained in this publication is of a general nature, and does not take into account your investment objectives, financial situation or needs. GESB is not licensed to provide financial product advice. Past performance may not be a reliable indicator of future performance. Before acting or relying on any of the information contained in this publication, you should consider seeking professional financial advice from GESB Financial Advice or another suitably qualified adviser.

FUND FACTS

Investment objective:

To outperform the plan's benchmark index + 1.2% pa over rolling 3 year periods

Who might choose this plan?:

People looking to maximise their long-term investment returns and who can accept a wide range of earnings (high to low) from year to year

Expected risk/ return profiles:

High risk and return

Possibility of a negative return:

Relatively high

TOP 10 HOLDINGS

Australian shares

Amcor
ANZ
BHP Billiton
Brambles
Commonwealth Bank
National Australia Bank
Rio Tinto
Telstra
Westpac
Woolworths

International shares

Barrick Gold
Exxon Mobil
GlaxoSmithKline
HSBC
IBM
Microsoft
Oracle Corp
Pfizer
Roche
Vodafone

MANAGERS

GESB adopts a multi-manager structure and engages the following specialist investment managers to manage GESB investment plans:

International shares

Edinburgh
Fidelity
Genesis
GMO
Lazard
Newton
Sarasin
Schroders
State Street

Australian shares

AMP
Arnhem
Perennial
SG Hiscock
Tribeca

Private equity~

Macquarie

Property

AMP
CBRE Clarion
Perennial

Cash

Macquarie

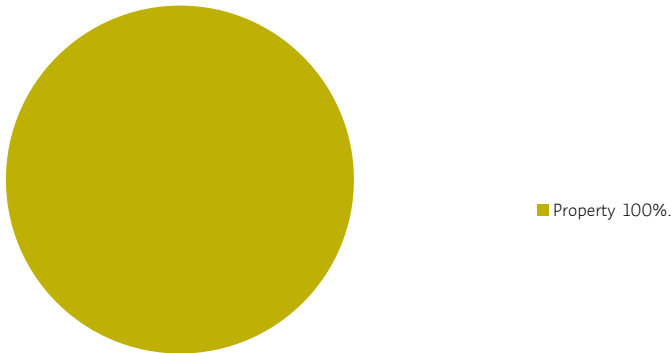
Global fixed interest~

AMP
Aberdeen
PIMCO
UBS
Wellington

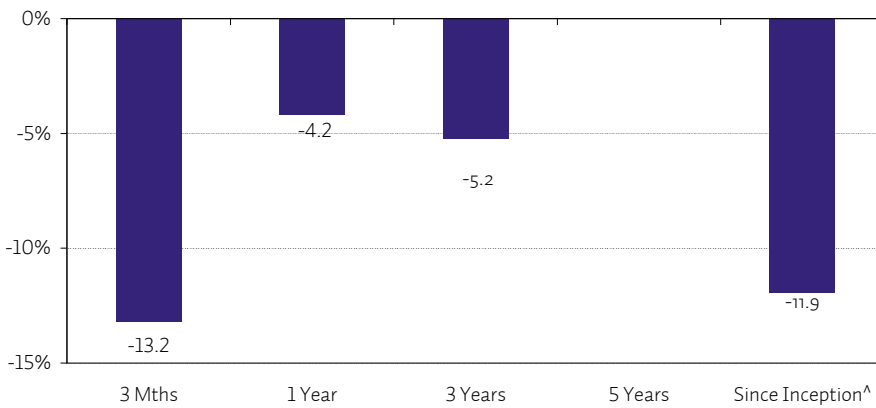
GESB Super MY plan - Property

QUARTERLY FACT SHEET AS AT 30/09/11

TARGET STRATEGIC ASSET ALLOCATION*



INVESTMENT RETURNS#



Notes:
All returns are reported net of Management Expense Ratio (MER) and applicable taxes. Any returns greater than 1 year are annualised. Any returns not shown are unavailable.

^Inception date 22/05/2007

*The target allocations and allowable ranges may be subject to change during your membership. GESB may alter the strategic asset allocation or the composition of individual asset classes from time to time, without prior notice.

The cost of managing different investments varies, so the MER is different for each investment plan. For example, investment costs for the Cash plan or Conservative plan will be lower than those for a Growth plan, as growth assets are typically more complex and expensive to manage.

The performance information should be used as a guide only. The performance of your investment plan is not guaranteed and returns may move up and down depending on market conditions. Past performance should not be relied on as an indication of future performance. Changes in investment strategy, such as the appointment of new external investment managers, may impact on future performance.

All MY plan strategies may contain a small strategic allocation to cash for liquidity purposes.

MY plan Property option generally only invests in listed property investments.

Issued on 02/12/2011

The information contained in this publication is of a general nature, and does not take into account your investment objectives, financial situation or needs. GESB is not licensed to provide financial product advice. Past performance may not be a reliable indicator of future performance. Before acting or relying on any of the information contained in this publication, you should consider seeking professional financial advice from GESB Financial Advice or another suitably qualified adviser.

FUND FACTS

Investment objective:	To outperform the plan's benchmark index + 1.1% pa over rolling 3 year periods
Who might choose this plan?:	People who want moderate earnings and a moderate level of fluctuation in investment returns from year to year
Expected risk/ return profiles:	Medium - high risk and return
Possibility of a negative return:	Relatively high

MANAGERS

GESB adopts a multi-manager structure and engages the following specialist investment managers to manage GESB investment plans:

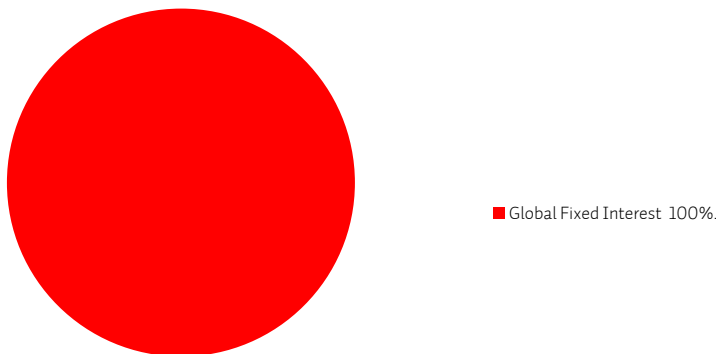
International shares	Private equity [~]
Edinburgh	Macquarie
Fidelity	Property
Genesis	AMP
GMO	CBRE Clarion
Lazard	Perennial
Newton	Cash
Sarasin	Macquarie
Schroders	Global fixed interest[~]
State Street	AMP
Australian shares	Aberdeen
AMP	PIMCO
Arnhem	UBS
Perennial	Wellington
SG Hiscock	
Tribeca	

[~]Global fixed interest has been separated into government bonds and diversified fixed interest. Private equity was previously communicated as a part of the alternative asset class.

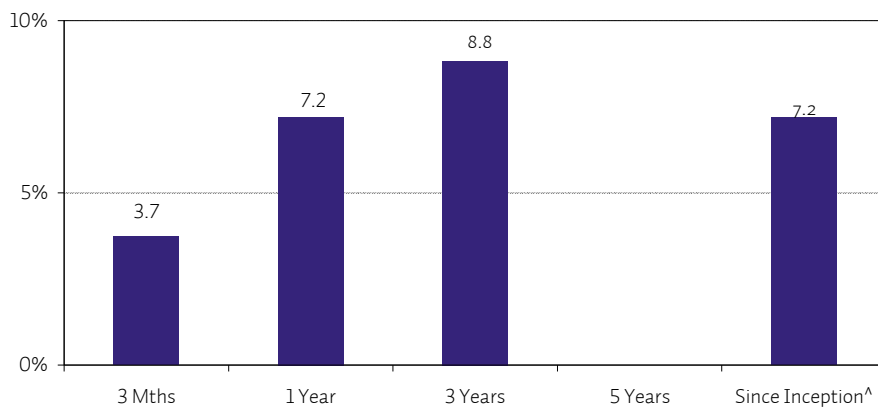
GESB Super MY plan - Global Fixed Interest

QUARTERLY FACT SHEET AS AT 30/09/11

TARGET STRATEGIC ASSET ALLOCATION*



INVESTMENT RETURNS#



Notes:
All returns are reported net of Management Expense Ratio (MER) and applicable taxes. Any returns greater than 1 year are annualised. Any returns not shown are unavailable.

^Inception date 22/05/2007

*The target allocations and allowable ranges may be subject to change during your membership. GESB may alter the strategic asset allocation or the composition of individual asset classes from time to time, without prior notice.

The cost of managing different investments varies, so the MER is different for each investment plan. For example, investment costs for the Cash plan or Conservative plan will be lower than those for a Growth plan, as growth assets are typically more complex and expensive to manage.

The performance information should be used as a guide only. The performance of your investment plan is not guaranteed and returns may move up and down depending on market conditions. Past performance should not be relied on as an indication of future performance. Changes in investment strategy, such as the appointment of new external investment managers, may impact on future performance.

All MY plan strategies may contain a small strategic allocation to cash for liquidity purposes.

MY plan Global Fixed Interest invests in government bonds and diversified fixed interest.

FUND FACTS

Investment objective: To outperform the plan's benchmark index + 0.1% pa over rolling 3 year periods

Who might choose this plan?: People who want fairly stable returns from year to year rather than seeking long-term growth

Expected risk/ return profiles: Lower risk and return

Possibility of a negative return: Low

MANAGERS

GESB adopts a multi-manager structure and engages the following specialist investment managers to manage GESB investment plans:

International shares	Private equity [~]
Edinburgh	Macquarie
Fidelity	Property
Genesis	AMP
GMO	CBRE Clarion
Lazard	Perennial
Newton	Cash
Sarasin	Macquarie
Schroders	Global fixed interest[~]
State Street	AMP
Australian shares	Aberdeen
AMP	PIMCO
Arnhem	UBS
Perennial	Wellington
SG Hiscock	
Tribeca	

[~]Global fixed interest has been separated into government bonds and diversified fixed interest. Private equity was previously communicated as a part of the alternative asset class.

Issued on 02/12/2011

The information contained in this publication is of a general nature, and does not take into account your investment objectives, financial situation or needs. GESB is not licensed to provide financial product advice. Past performance may not be a reliable indicator of future performance. Before acting or relying on any of the information contained in this publication, you should consider seeking professional financial advice from GESB Financial Advice or another suitably qualified adviser.

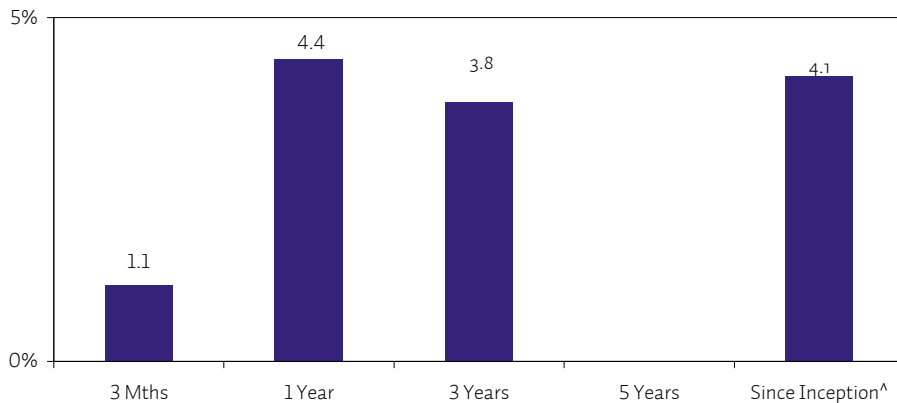
GESB Super Cash plan

QUARTERLY FACT SHEET AS AT 30/09/11

TARGET STRATEGIC ASSET ALLOCATION*



INVESTMENT RETURNS#



Notes:

All returns are reported net of Management Expense Ratio (MER) and applicable taxes. Any returns greater than 1 year are annualised. Any returns not shown are unavailable.

^Inception date 31/05/2007

*The target allocations and allowable ranges may be subject to change during your membership. GESB may alter the strategic asset allocation or the composition of individual asset classes from time to time, without prior notice.

The cost of managing different investments varies, so the MER is different for each investment plan. For example, investment costs for the Cash plan or Conservative plan will be lower than those for a Growth plan, as growth assets are typically more complex and expensive to manage.

The performance information should be used as a guide only. The performance of your investment plan is not guaranteed and returns may move up and down depending on market conditions. Past performance should not be relied on as an indication of future performance. Changes in investment strategy, such as the appointment of new external investment managers, may impact on future performance.

All investment plans have an allocation to cash through the underlying asset classes. For the Conservative plan, this is included in the allowable range for cash.

FUND FACTS

Investment objective:	To achieve a return of CPI (Consumer Price Index) +1.4% pa over rolling 3 year periods, with a probability of 75%
Who might choose this plan?:	People who want to protect the value of their investment in the short term, rather than seeking long-term growth
Expected risk/ return profiles:	Low risk and return
Possibility of a negative return:	Minimal probability of negative returns in any one year

MANAGERS

GESB adopts a multi-manager structure and engages the following specialist investment managers to manage GESB investment plans:

International shares	Private equity [~]
Edinburgh	Macquarie
Fidelity	Property
Genesis	AMP
GMO	CBRE Clarion
Lazard	Perennial
Newton	Cash
Sarasin	Macquarie
Schroders	Global fixed interest[~]
State Street	AMP
Australian shares	Aberdeen
AMP	PIMCO
Arnhem	UBS
Perennial	Wellington
SG Hiscock	
Tribeca	

[~]Global fixed interest has been separated into government bonds and diversified fixed interest. Private equity was previously communicated as a part of the alternative asset class.

Issued on 02/12/2011

The information contained in this publication is of a general nature, and does not take into account your investment objectives, financial situation or needs. GESB is not licensed to provide financial product advice. Past performance may not be a reliable indicator of future performance. Before acting or relying on any of the information contained in this publication, you should consider seeking professional financial advice from GESB Financial Advice or another suitably qualified adviser.